

Install the tutorial of ( Gigabyte AORUS GPU  
RTX2080T20802070 Aurora RGB )

## INSTALL TUTORIAL (DEMONSTRATION)



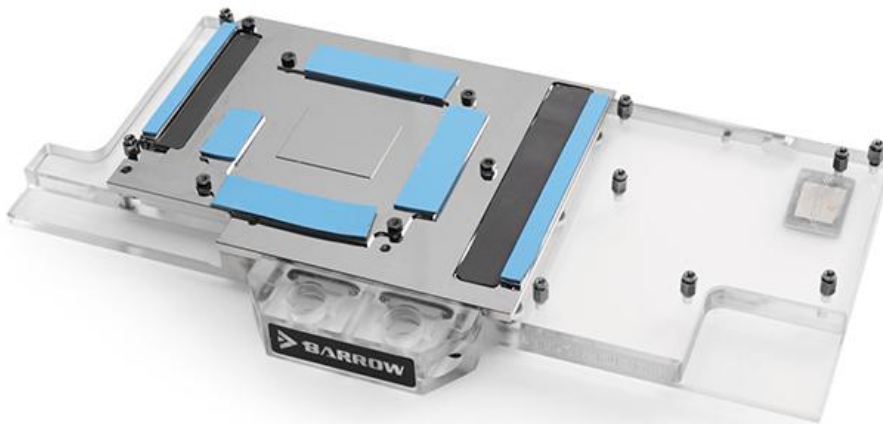
1.Remove the red position screws in the picture



2.Remove the red position screws in the picture



3.Clean and re-apply thermal grease



4.Stick the corresponding specifications of thermal grease in the corresponding position,  
paying attention to the cutting size

