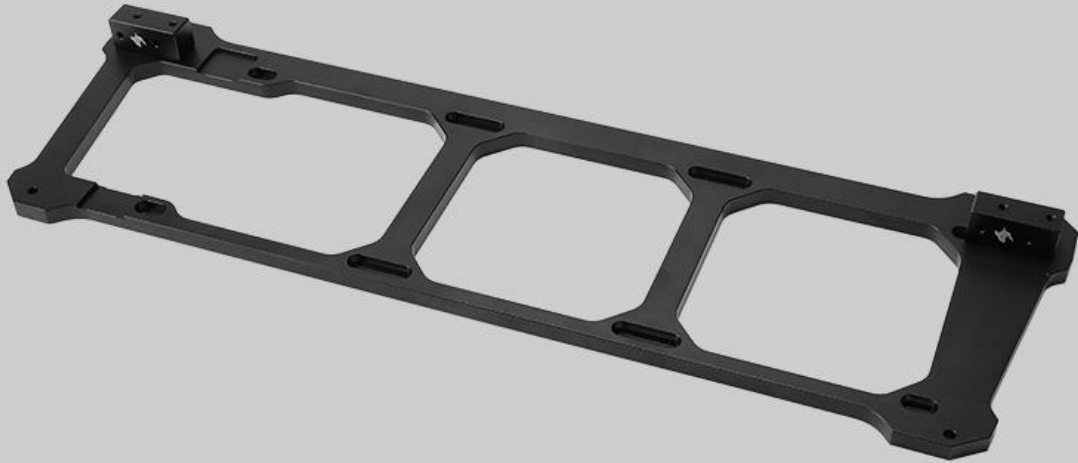
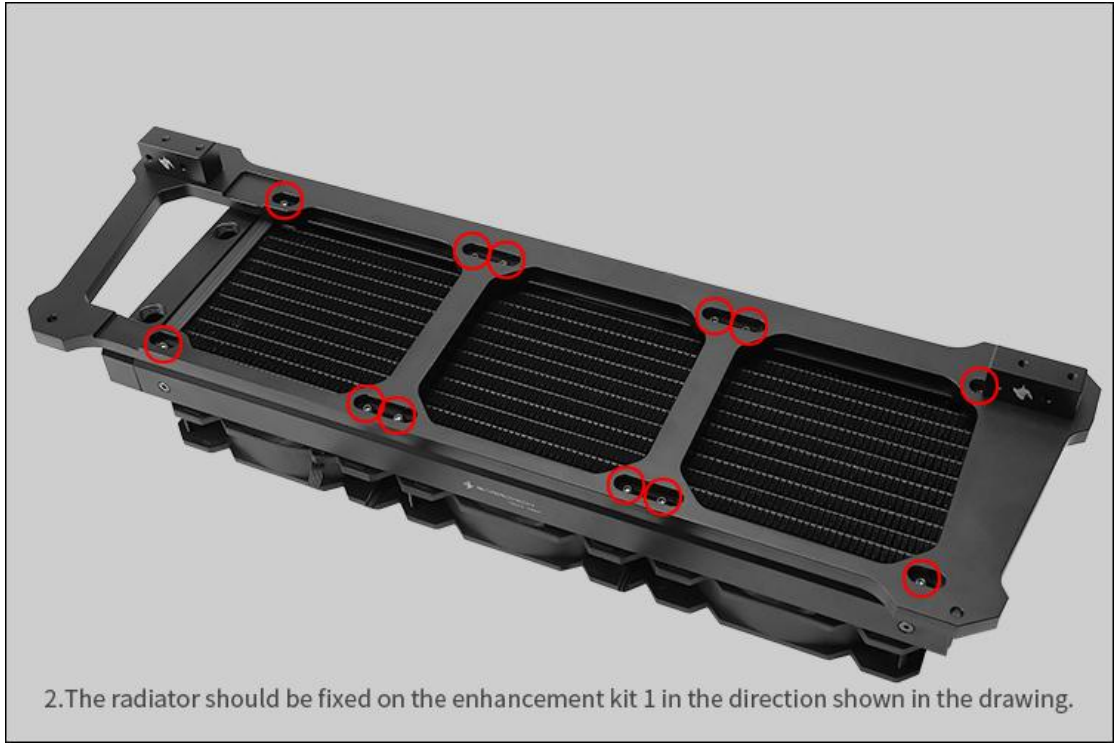


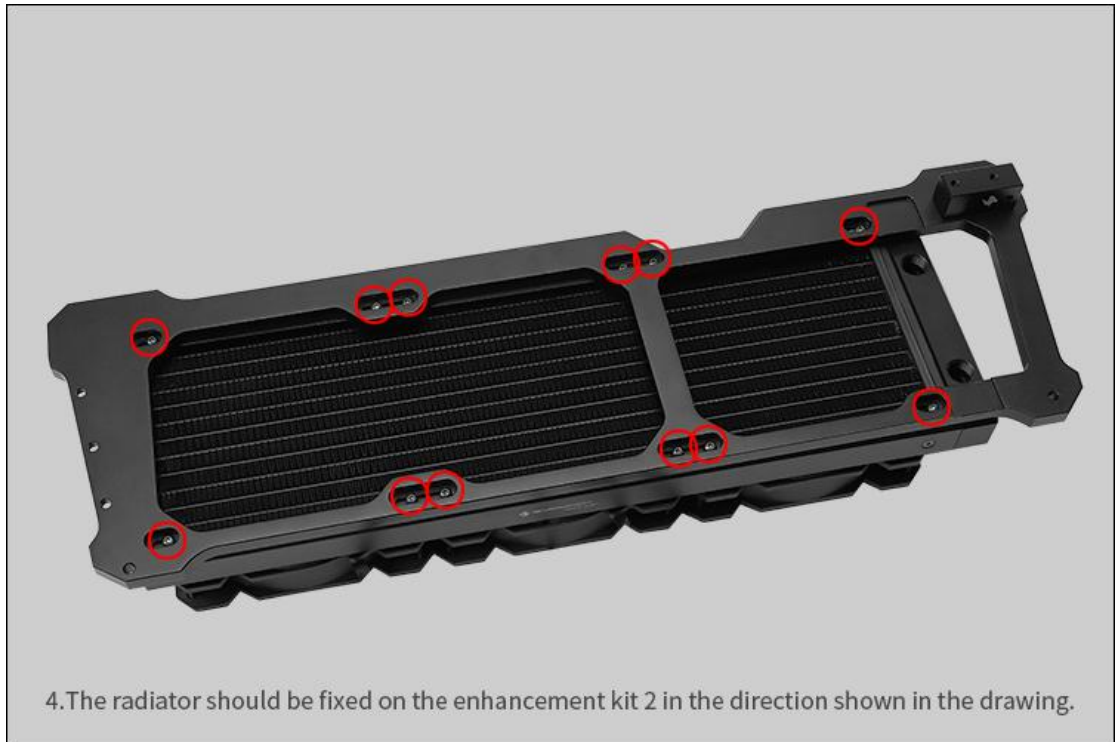
Install the tutorial of (WING cooling performance enhancement kit Expanding radiator kit of modular case)

Install tutorial
安装教程



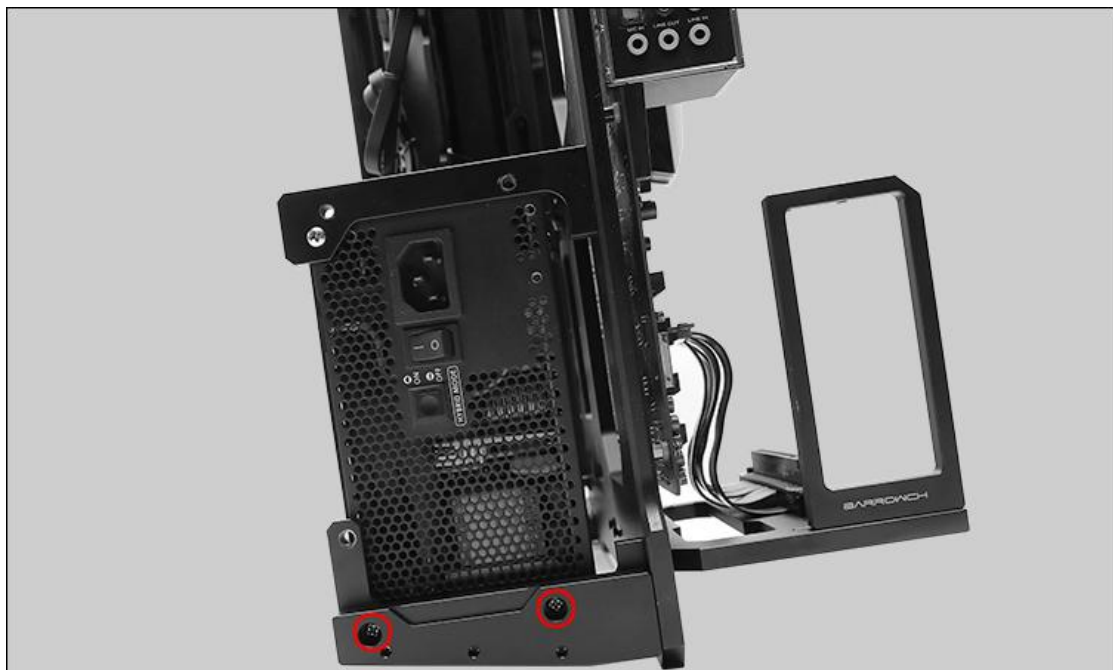
1. The included screws should be used to secure the adapter block to the enhancement kit 1 in the direction shown in the drawing.







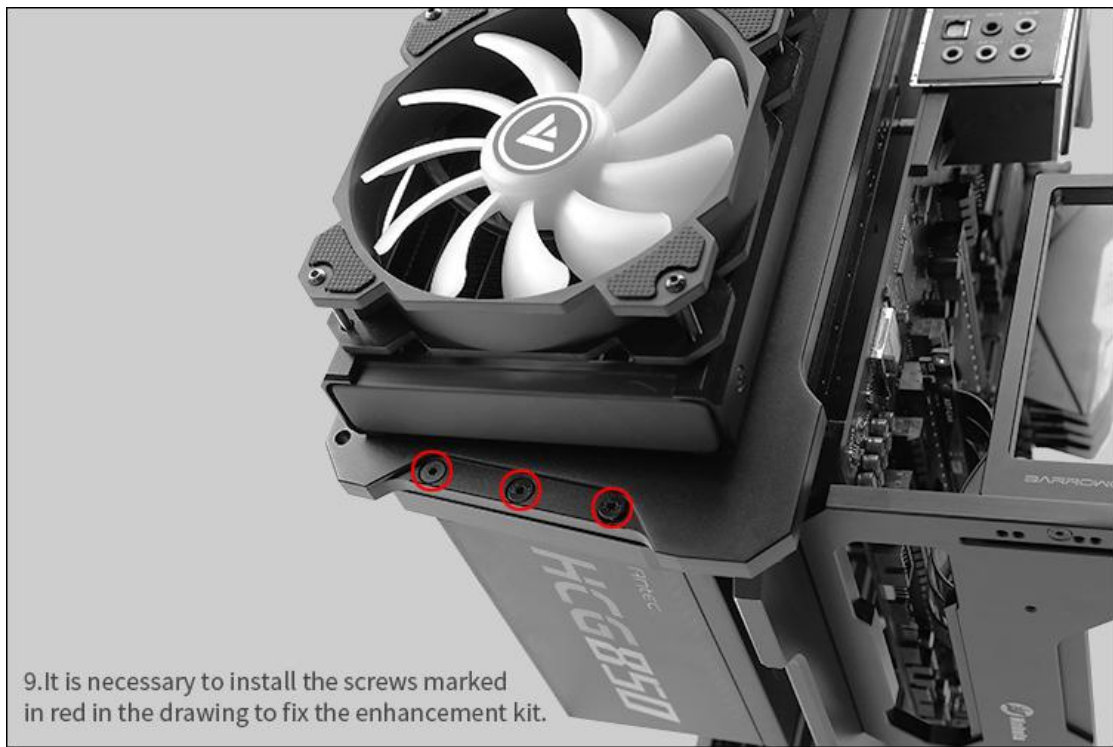
6. The screws marked in red in the drawing need to be removed (only the screws marked in blue in the drawing are retained).



7. It is necessary to install the screws marked in red in the drawing (use the screws for power adapter block) and connect the 90-degree power extension cable.



8. It is necessary to install the screws marked in red in the drawing to fix the radiator enhancement kit with the case.



9. It is necessary to install the screws marked in red in the drawing to fix the enhancement kit.



10.The installation is complete