

Install the tutorial of (MSI RTX 2060 VENTUS WATER BLOCK)

INSTALL TUTORIAL (DEMONSTRATION)



1.Remove the red position screws in the picture



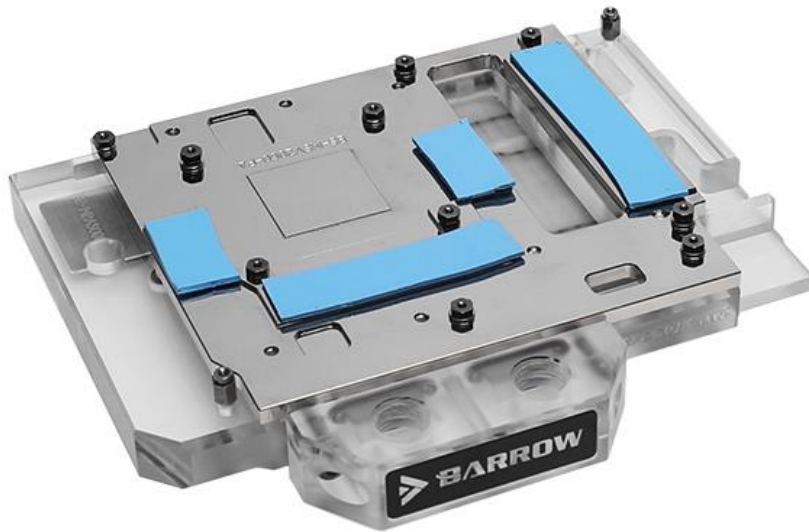
2.Remove the red position screws in the picture



3.As shown, take out two buckles in the red position, remove side fins



4.Clean and re-apply thermal grease



5. Stick the corresponding specifications of thermal grease in the corresponding position, paying attention to the cutting size



6. Mount the red position screws in the picture

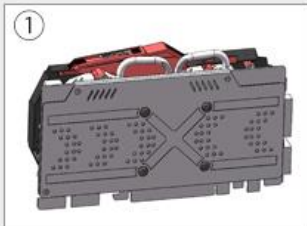


7. The installation is complete

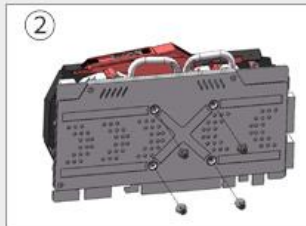
DEMONSTRATION INSTALLATION TUTORIAL (DRAWING)

STEP 1: REMOVE ORIGINAL RADIATOR

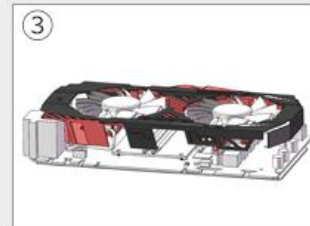
THE FIRST STEP: ORIGINAL RADIATOR REMOVED THE FIRST STEP: ORIGINAL RADIATOR REMO



Original GPU



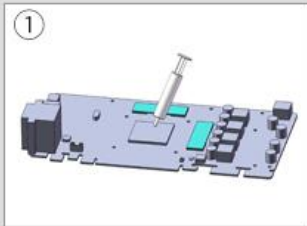
Unscrew the GPU backplane screws



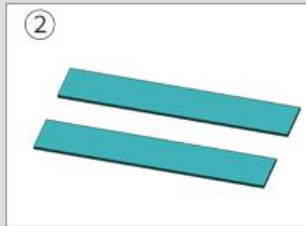
Remove the original fan power cable along with the original radiator

STEP 2: APPLY GREASE/STICK SILICON PAD

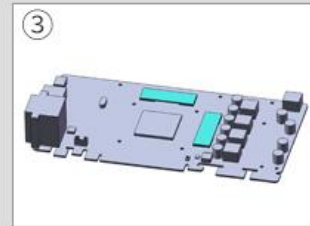
THE FIRST STEP: ORIGINAL RADIATOR REMOVED THE FIRST STEP: ORIGINAL RADIATOR REMOVEDAL RADIAT



Clean up the residual grease on the circuit board and the chip, then re apply a thin layer ones .



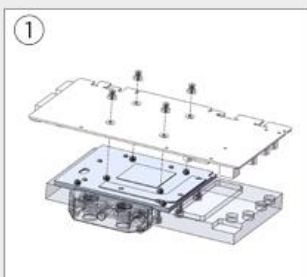
Cut the thermal gel pad into the appropriate size



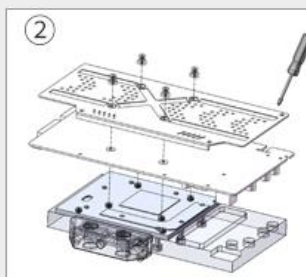
Stick them to the GPU heat chips

STEP 3: INSTALL WATER BLOCK

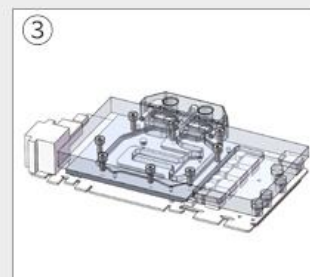
THE FIRST STEP: ORIGINAL RADIATOR REMOVED THE FIRST STEP:



Put the GPU water block backplane screws on the GPU screw holes and make sure they are at the correct spot.



the GPU backplane hole fit to the water block base hole, then lock by screws



Done

* Note:

If the GPU backplate is not installed, please place the insulation gasket on the mounting hole and lock it with a spring screw. This is general installation demonstration tutorial. The specific installation details may be slightly different depend on the GPU cards, in kind prevail.