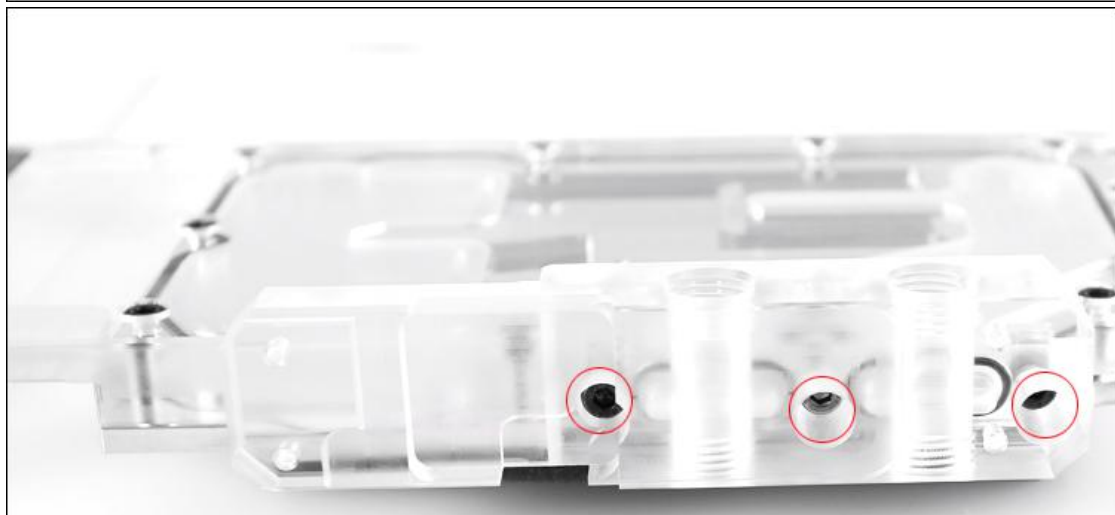


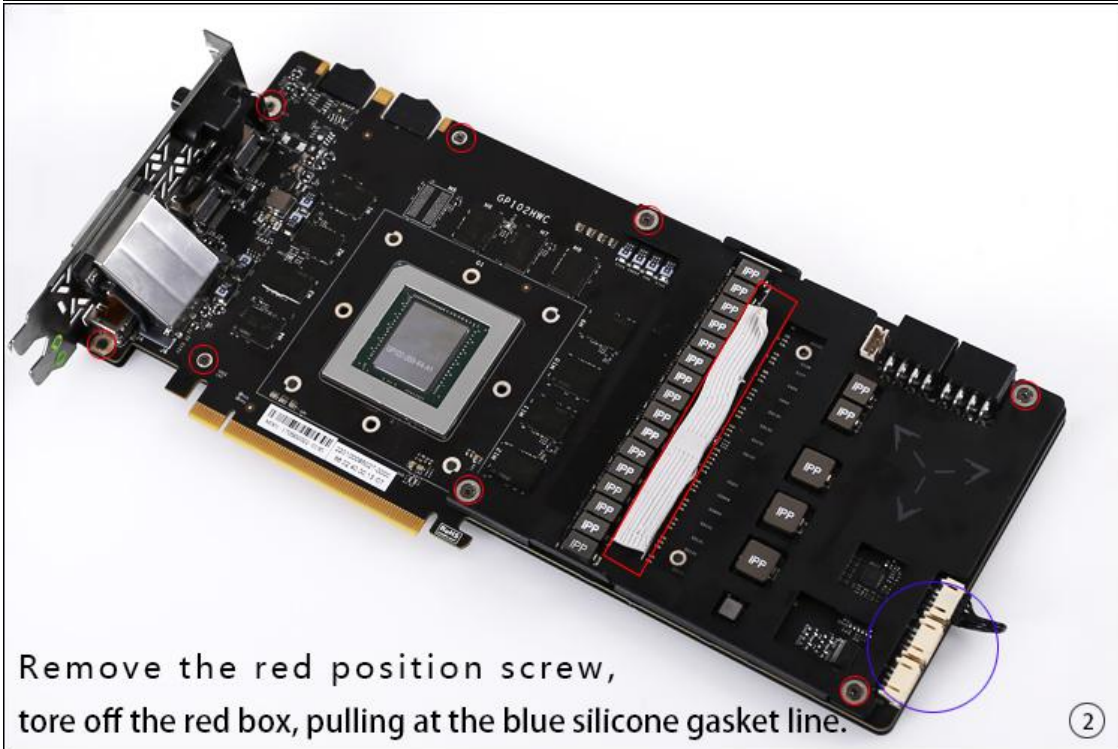
Press apron into the apron apron of bridge head  
(A slight tug will make it easier to install)

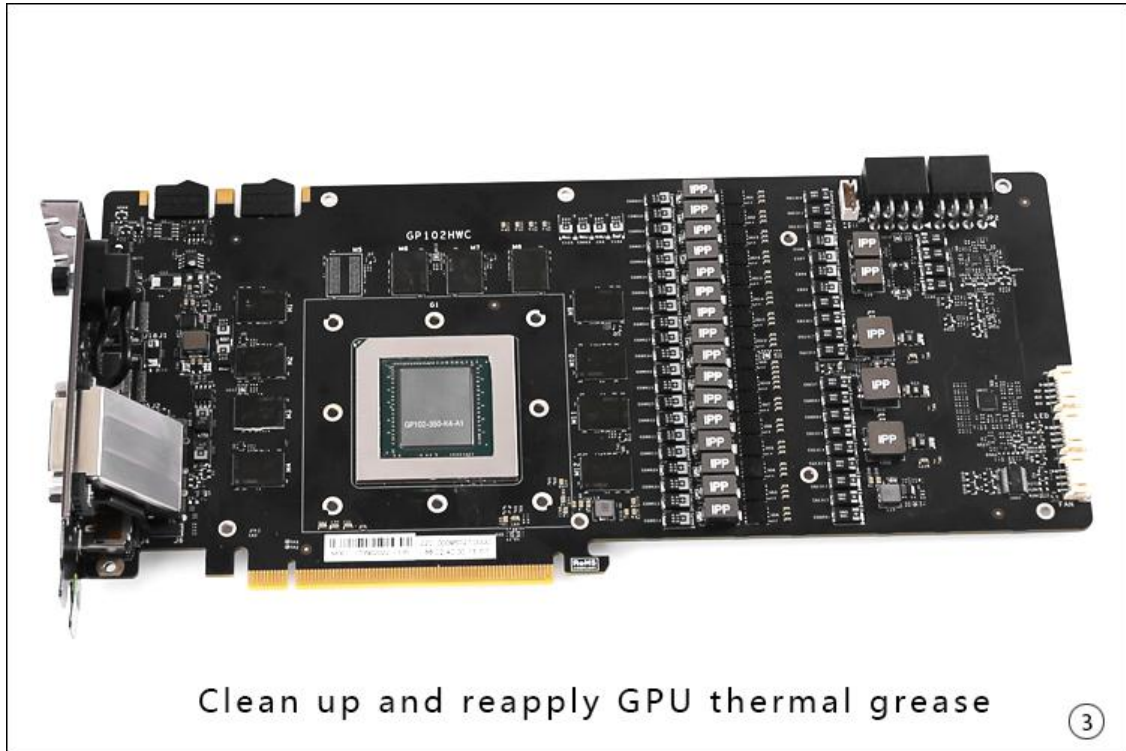
②



The three M4X12 screws installed at the bridge  
corresponding position, pay attention to strength

③





Clean up and reapply GPU thermal grease

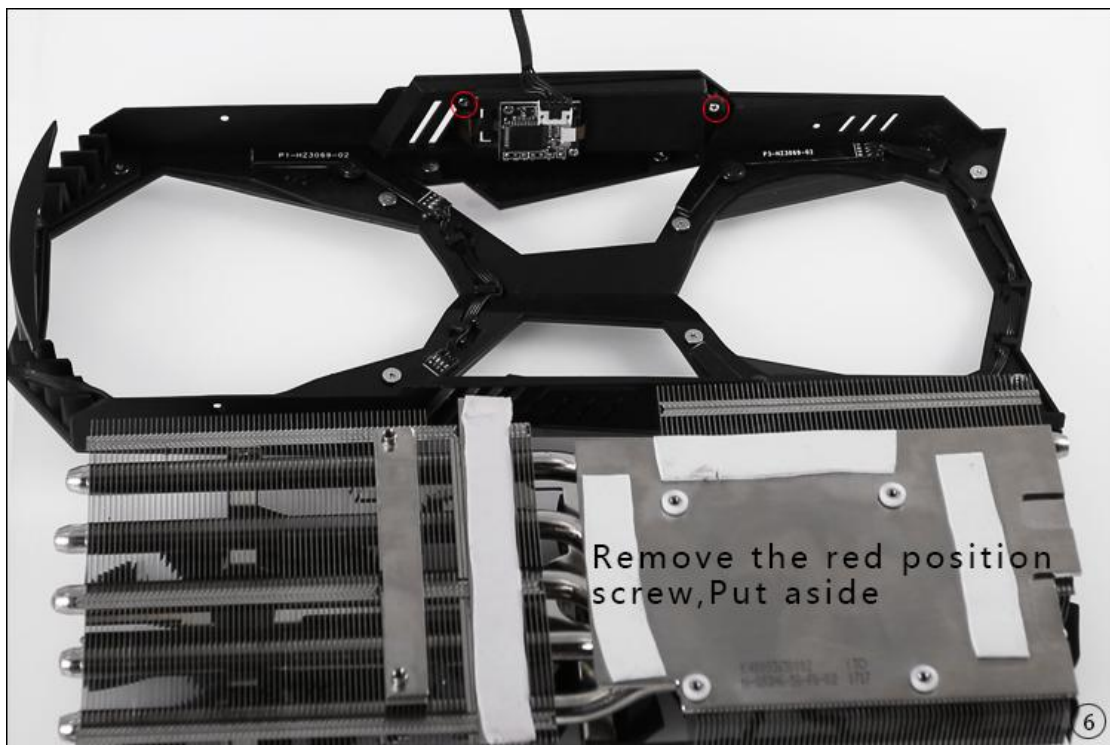
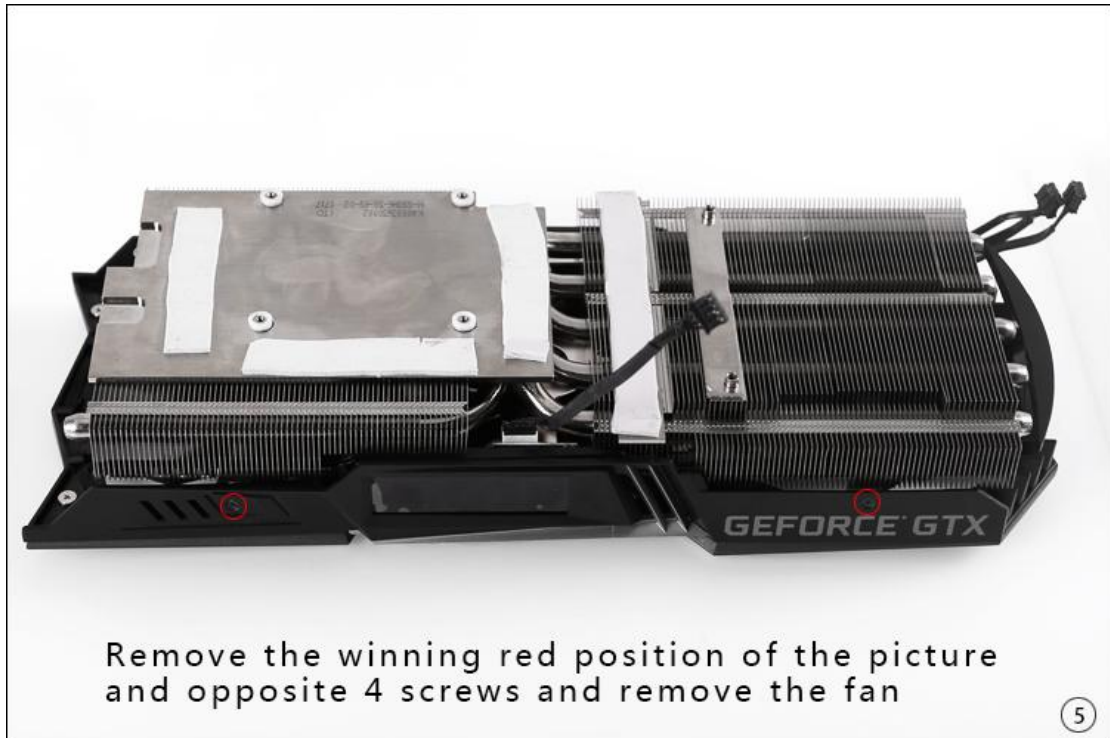
3



In the water block floor with good thermal grease

4

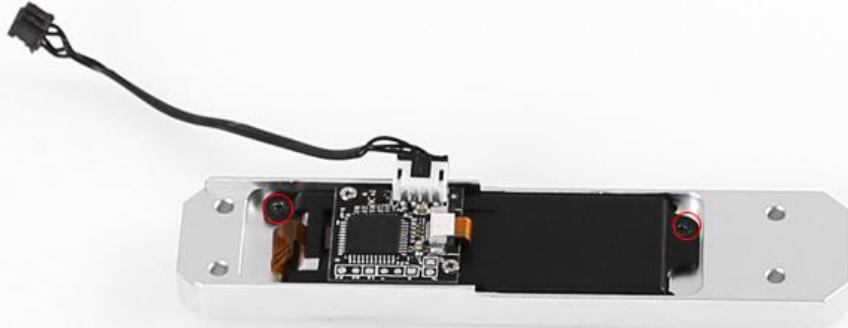
为了方便安装先将显示屏安装





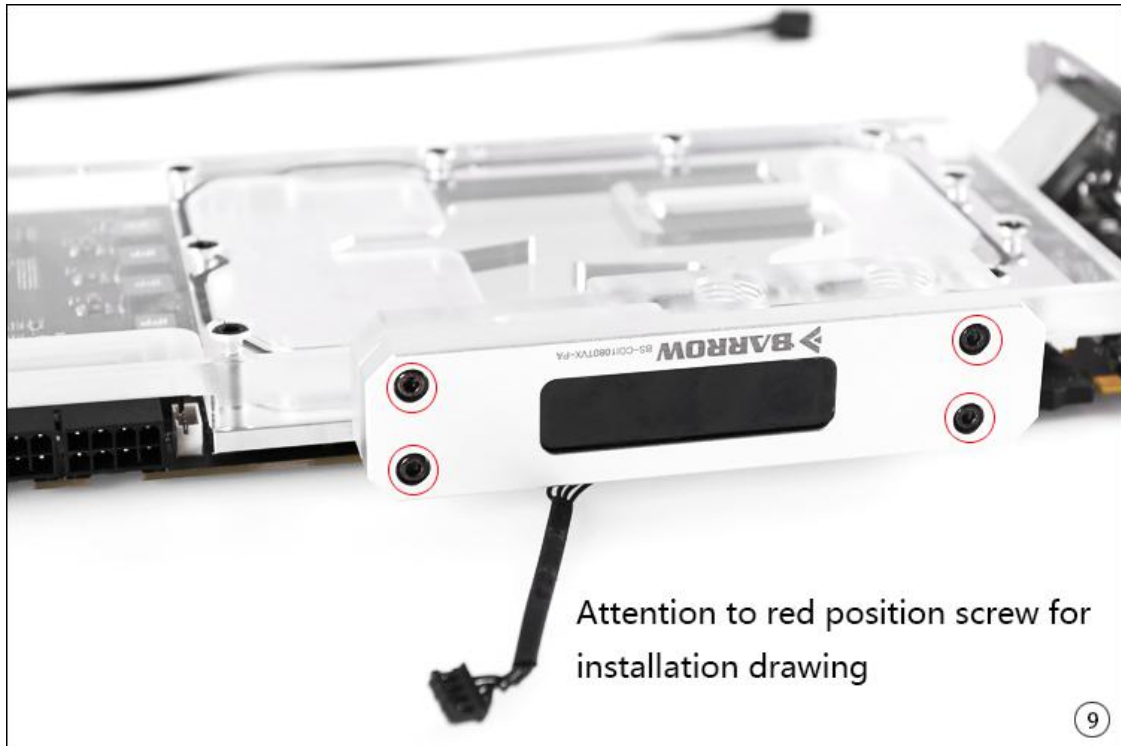
Carefully remove the original monitor and tear off the protective film

⑦



Use the fifth step retaining screws to fit the screen onto the panel

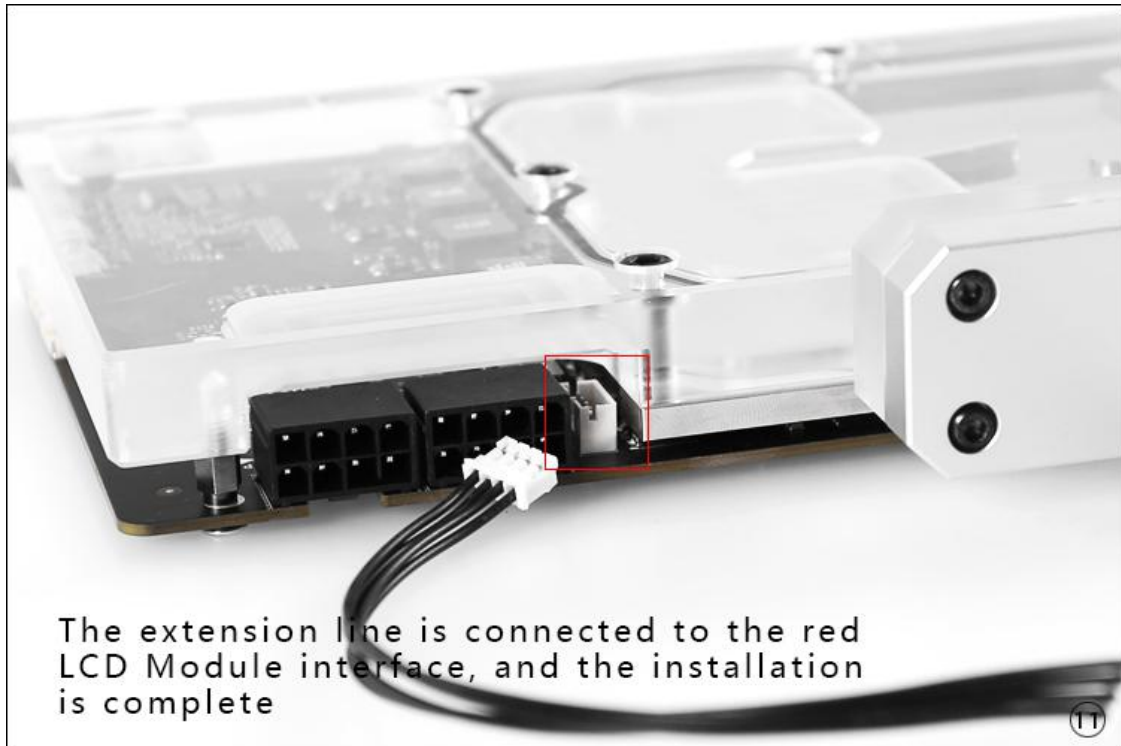
⑧



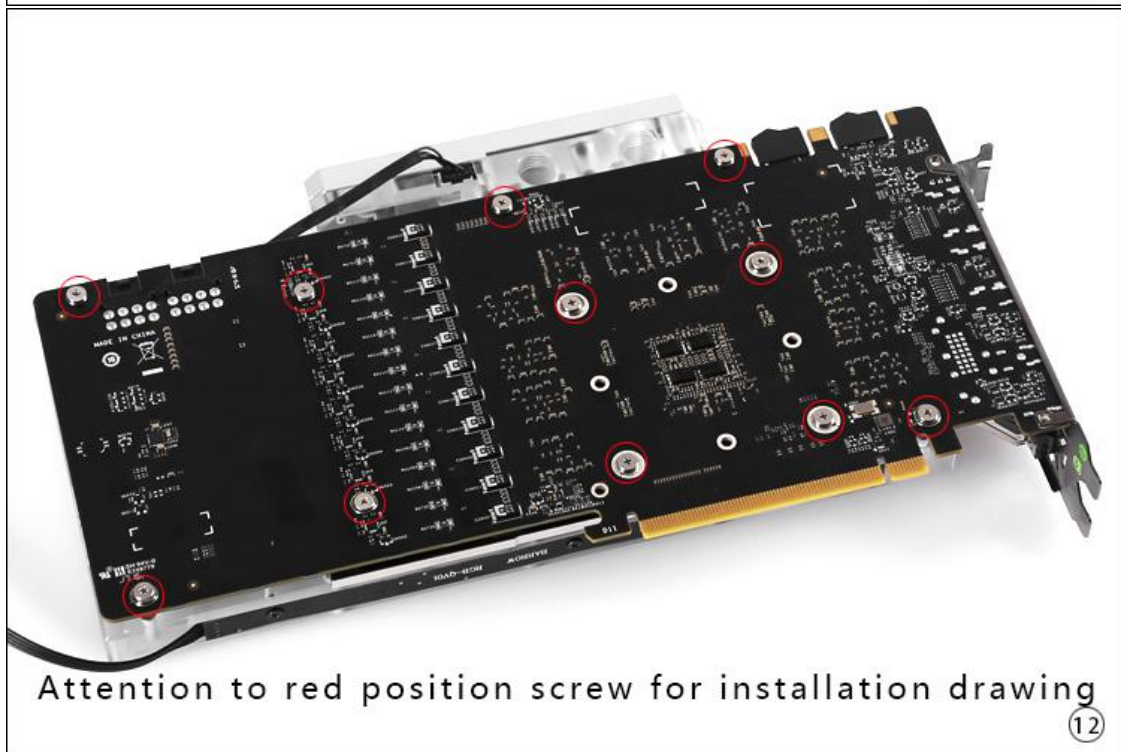
9



10

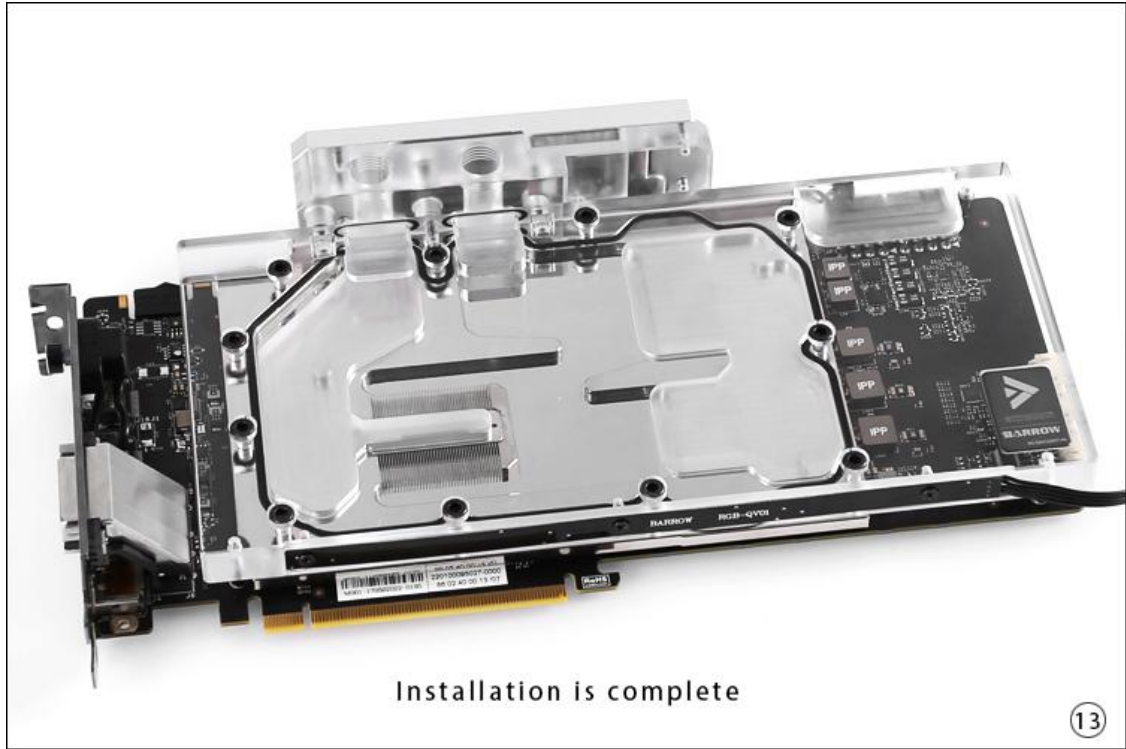


The extension line is connected to the red LCD Module interface, and the installation is complete



Attention to red position screw for installation drawing





Installation is complete